

# Man's breast cancer in the laboratory of anatomy and pathological cytology of CHU-RN of N'Djamena about the 5 cases and the literature review.

**Némian M**<sup>1</sup>, Adam A M.<sup>2</sup>, Ndongar A.<sup>2</sup>, Siniki F.<sup>3</sup>

**Némian M**, the chief of unit anatomy and pathological cytology of CHU-RN of N'Djamena

E-mail : mnemian@yahoo.com

## Introduction

Known as women's pathology, the cancer of breast affects also men but it is less frequency (1% of cancers) [1]. The aim of this study is to describe clinical, historical, immunohistochemically and prognosis aspects of this unknown disease.

## Patients and methods

Our study is focused on retrospective and descriptive analyses of the compiled five (5) observations to the unit anatomy and pathological cytology of CHU-RN of N'Djamena during the period of December 2013 to September 2021. The data relative to the patients have been gathered thanks to the anatomopathological reports and the clinical file of different departments of surgery source.

## Results

The medium age of our patients is 62, extremely 52 and 72. The clinical aspects have been retroaerolary masses in three cases and ulcerative and ulcerative budding lesions to superior outer quadrant in two cases. The tumoral sizes have been 3 to 7 cm of the high axle; all cases have been the infiltrated ductal carcinoma (picture 1 to 5). The rank histoprognostic of these cases have been SBR III in 3 cases and SBR II in 2 cases. There are 2 cases metastasis ganglion. four cases have profited of an immunohistochemically analysis to hormonal receivers and HER2. All these four cases have been threefold positive.

## Comment

Man's breast cancer occurs when he is about 60 years old according to the data of the literature [2]. It is what we have shown in our study.

**Key words:** cancer, breast, man, Chad.

## Conclusion

Man's breast cancer is a pathology that exists in our area. The diagnosis is histological and it reveals the infiltrated ductal carcinoma. The misunderstanding of this disease produces a delay in diagnosis and leads to a bad prognosis.

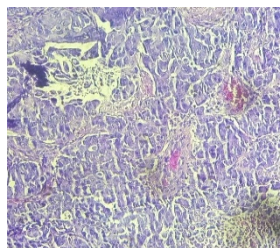


Figure 1: cas 1 (2017)  
Infiltrated ductal carcinoma  
Grade SBR III

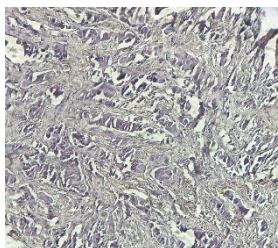


Figure 2: cas 2 (2018)  
Infiltrated ductal carcinoma  
Grade SBR II

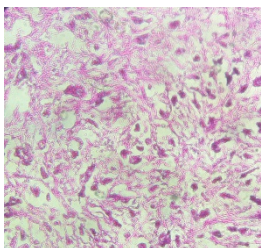


Figure 3: cas 3 (2018)  
Infiltrated ductal carcinoma  
Grade SBR II

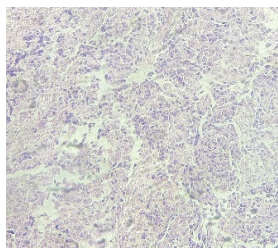


Figure 4: cas 4 (2020)  
Infiltrated ductal carcinoma  
Grade SBR III

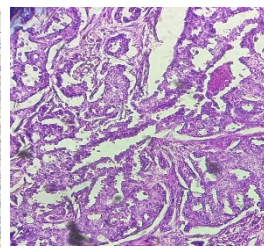


Figure 5: cas 5 (2020)  
Infiltrated ductal carcinoma  
Grade SBR III

## References

1. Elbachiri M, Fatima S, Bouchbika Z, Benchekroum N, Joughadi H, Tawfiq N et al. Cancer du sein chez l'homme : à propos de 40 cas et revue de la littérature. Pan Afr Med J. Déc 2017; 28 : 287.
2. Attar I, Addadi H, Yaakoubi S, Laghzaoui B O. Cancer du sein chez l'homme à propos de 2 cas et revue de la littérature : quel pronostic et quelle particularité. International Journal of Medical Reviws and case Report. Fev 2021 ; 5(6) : 28-31.