

# Histopathological Review of Splenectomy Specimens in the National public health laboratory, Sudan

Mehad A. \*, Ahmed M. H. , Azza A. Z



National Public Health Laboratory/Omdurman Islamic University , faculty of Medicine , Department of Pathology, Omdurman ,Sudan.

## INTRODUCTION

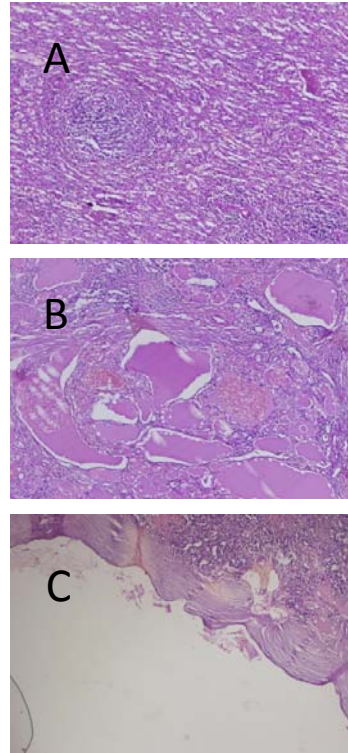
Sudan is a vast tropical East-northern African country, with various indications for splenectomy. The aim of this study is to shed light on the histopathological entities behind splenectomy specimens received in the histopathology department at the national health laboratory, Khartoum, Sudan .

## MATERIALS AND METHODS

This is a cross sectional retrospective observational study. Data related to splenectomy specimens between January 2017 to September 2021 was extracted from the patients' archives records in the National public health laboratory. H&E stained sections were cut from FFPE tissue blocks. Slides were reexamined by two histopathologists.

## RESULTS

The total number of cases included in this study was 44. Twenty-three of the patients were males, with a male to female ratio of 1.09: 1. The age of the patients ranged from 8 months to 70 years. The highest incidence of splenectomy cases was in the age group of >1-10 years old. The majority of cases 45.5% (n=20) of splenectomies were done for congestive splenomegaly; followed by traumatic spleen following road traffic accidents and blunt trauma abdomen 13.6% (n=6)



Figures :A: chronic congestive splenomegaly, B: Lymphangioma, C: simple Splenic cyst (H &E stain)

## CONCLUSION

The findings of this study is comparable to studies conducted in other tropical countries. More studies are needed to describe the current situation in spleen histopathology in Sudan. Minimally invasive diagnostic procedure should be implemented in both neoplastic and nonneoplastic splenic disorders .

## REFERENCES

- Gupta D, Gupta A, Suri J, Singh K. Histomorphological spectrum in splenectomy specimens- A 5 year retrospective study. 2017;4(September):418–21.
- Choudhary M, Jandial R. Histopathological Review of Splenectomy Specimens: A Five Year Study in a Tertiary Care Centre in North India. Int J Heal Sci Res. 2019;9(10):242.
- Adelusola KA, Osasan SA, Afolabi OA. Histopathological study and audit of the spleen in Nigerians. 2007;14(3):195–200.

Histopathologic Findings	Frequency	Percentage
Congestive Splenomegaly	20	45.5
Traumatic Spleen	6	13.6
Extramedullary Haematopoiesis	4	9.1
Splenic Cyst	3	6.8
Gaucher Disease	2	4.5
Sinus Histocytosis	2	4.5
Others	7	16