

Squamous cell carcinoma of the breast: About 3 cases and review of the literature.

Touré M, Coulibaly B, Keita M, Maïga R, Sissoko T, Kamaté B, Traoré CB.
Contact : Dr Mamadou TOURE, CHU du Point G ; Bamako, Mali ; BP : 333
Email:mamadoutoure101@gmail.com

INTRODUCTION : Primary squamous cell carcinoma of the breast is very rare. It accounts for 0,1 to 2% of all invasive breast carcinoma. The objective was to describe 3 cases and review the literature.

MATERIEL AND METHOD: We report 3 cases of primary squamous cell carcinoma of the breast diagnosed and followed for 19 months. The samples were fixed in formalin 10% and then treated by the standard technic and by immunohistochemistry.

RESULTS:

Case 1: it was a patient with a progressive, painlessly progressive left breast swelling leading to an abscess.

Case 2: it was a patient with right breast swelling in the form of furunculosis with orange peel appearance and retraction of the nipple.

Case 3: it was a patient with a painless left upper outer quadrant nodule.

All three cases had mammography coupled with breast ultrasound objectifying a heterogeneous tissue mass in each. A biopsy was performed in the patients. The histology finds a squamous cell carcinoma. Cytokeratin is positive on immunohistochemistry, as long as the hormone receptors were negative. One patient received neoadjuvant chemotherapy. During the course, one of the patients died after 5 cures.

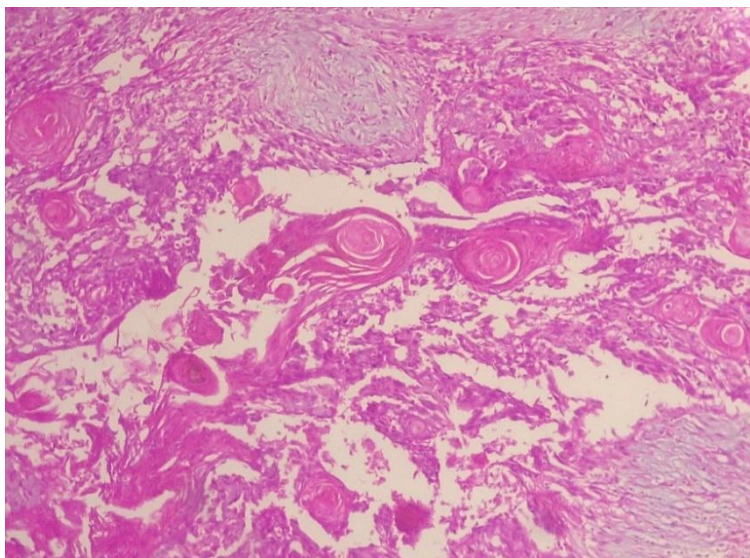


Fig 1: Hematoxylin-eosin stain of squamous cell carcinoma

CONCLUSION : Primary squamous cell carcinoma of the breast is rare. They have no clinical or radiological specificity. The poor prognosis can be explained by the diagnostic and therapeutic delay.

REFERENCES

- Fischer ER, Gregorio RM, Fischer B. The pathology of invasive breast cancer. *Cancer* 1975; 36: 1-84.
- Toikkonen S. Primary squamous cell carcinoma of the breast. *Cancer* 1981; 48: 1629-32.
- Cornog JL, Mobini J, Steiger E, Enterline HT. Squamous carcinoma of breast. *Am J Clin Pathol* 1971; 55(4): 410-17.