

LYMPHOMATOUS POLYPOSIS OF MANTLE CELL LYMPHOMA : A CASE REPORT.

KOUI BBS¹ ; KOUYATE M¹ ; COULIBALY ZI¹ ; KOUAME KSE¹ ; TOURE I², ABOUNA AD³ ; KOFFI KE¹, D'HORPOCK AF¹.

1. Pathological Anatomy and Cytology department of teaching hospital of Treichville (Côte d'Ivoire)
2. Pathological Anatomy and Cytology department of teaching hospital of Bouaké (Côte d'Ivoire)
3. Pathological Anatomy and Cytology department of teaching hospital of Cocody (Côte d'Ivoire)

***Introduction:** mantle cell lymphoma (MCL) is a rare lymphoma of the gastrointestinal tract that may present as multiple lymphomatous polyposis. We report a case of lymphomatous polyposis with a review of the literature.

***Material and method:** the study material was represented by a hemicolectomy piece fixed with ten percent diluted formalin. The various samples taken underwent the usual technique of paraffin embedding, cutting and staining with eosin hematein. A complementary immunohistochemical study was carried out in collaboration with the Department of Pathological Anatomy and Cytology of the University Institute of Cancerology of Toulouse (France).

***Results:** Histology study showed diffuse lymphomatous proliferation of the chorion made of small lymphoid cells with a hyperchromatic crenellated nucleus suggesting lymphomatous polyposis. Immunohistochemical examination showed the expression by the tumor cells of antibodies to CD20, CD5, bcl2 and Cyclin D1. They did not express antibodies to CD10 and CD23. The Ki67 proliferation index was 15%. These immunophenotypic aspects were in favor of mantle cell lymphomatous polyposis.

***Conclusion:** Mantle cell lymphoma is a rare condition that can produce a picture of colonic polyposis. Are diagnostic based on standard histological examination supplemented by an immunohistochemical study.

***Key words :** polyposis, lymphoma, mantle cell.

*Reference:

1. Williams ME, Bernstein SH, Jares P, Kahl BS, Witzig TE, Gordon LI. Recent advances in mantle cell lymphoma: report of the 2012 Mantle Cell Lymphoma Consortium Workshop. *Leuk Lymphoma*. 2013;54:1882–90.
2. Tallarico M, Smith SM. From minimal residual disease to maintenance therapy: optimizing tools for treatment of mantle cell lymphoma. *Oncology (Williston Park)*. 2016;30:361–2.

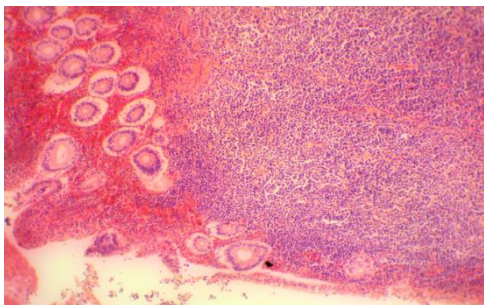


Fig 1(HE x 100) : diffuse lymphoid proliferation of lamina propria.

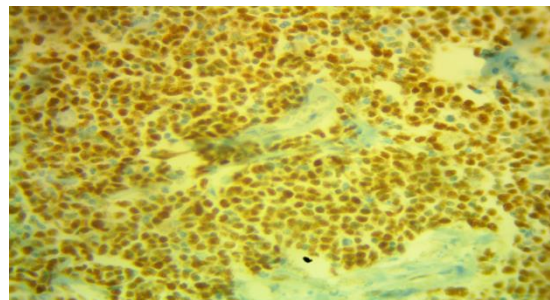


Fig 2 (IHC x100) : positive immunostaining with Cyclin D1 antibody.