

# EPIDEMIOLOGICAL AND HISTOPATHOLOGICAL ASPECTS OF DIGESTIVE CANCERS IN BOUAKE

**Kobenan AAR**, N'Dah KJ, Touré I, Aman NA, Tuo WTA, Koffi KD, Oka KH, Ndri C, Yao GV.

Department of Pathological Anatomy, UHC, Bouaké, kobrebecca@gmail.com

## Introduction

According to Globocan 2020, digestive cancers represent 34.5% of all cancers worldwide. In sub-Saharan Africa, particularly in Côte d'Ivoire, they are frequent and constitute one of the most common causes of death by cancer. It's a real public health problem. **Objectives** : To determine the epidemiological and anatomopathological aspects of cancers diagnosed in Bouaké in order to improve their management

## Materials and methods

This retrospective and descriptive study took place over 24 months. It focused on histologically confirmed digestive cancers identified from the registers of Anatomy and Cytology Pathology of the University Hospital and a local private clinic.

## Results

147 digestive cancers out of 426 cancers identified (34.5%). Average age: 53.9 years (extremes: 22 - 83 years). sex ratio 1.53.

**Table I: distribution of patients by type of digestive cancer**

Seat	frequency	percent
Anal area	8	5,4%
<b>Colon-Rectum</b>	<b>38</b>	<b>25,8%</b>
Esophagus	15	10,2%
<b>Stomach</b>	<b>59</b>	<b>40,1%</b>
Liver	2	1,3%
Small intestine	3	2%
Pancreas	1	0,6%
Oral cavity	12	8,2%
Epiploon	3	2%
Other places	6	2,9%

**Table II: distribution of digestive cancers : by site and histological type**

Thistological tyoe	Frequency	percent
<b>STOMACH</b>	<b>59</b>	<b>40,1%</b>
Adenocarcinoma	56	94,9%
Other (GIST, Liposarcoma ...)	3	5,1%
<b>COLON-RECTUM</b>	<b>38</b>	<b>25,8%</b>
Adenocarcinoma	34	89,4%
Other (NET, Carcinoma ...)	4	10,6%
<b>ESOPAGUS</b>	<b>15</b>	<b>10,2%</b>
Squamous cell carcinoma	11	73,3%
Adenocarcinoma	4	26,7%
<b>BUCAL CAVITY</b>	<b>12</b>	<b>12,8%</b>
Squamous cell carcinoma	12	100%

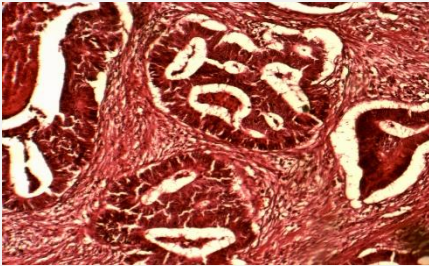


Figure 1: adenocacinoma of the colon

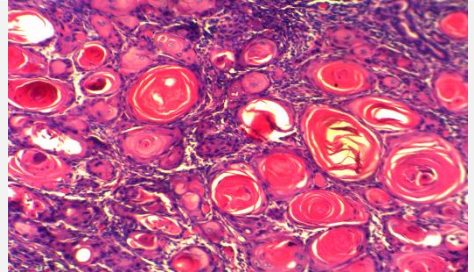


Figure 2: invasive and keratinising squamous cell carcinoma of the oral cavity

## Conclusion

This preliminary study shows that digestive cancers are fairly common in this region of the country. The predominant locations are gastric and colorectal.

## References

GLOBOCAN, IICC. New Global Cancer Data. 2020.  
Sung H, Ferlay J, Siegel RL et al. Global cancer statistics 2020: GLOBOCAN estimates of incidence and mortality worldwide for 36 cancers in 185 countries. CA: a cancer journal for clinicians 2021; 71(3): 209-49.